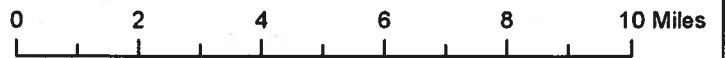


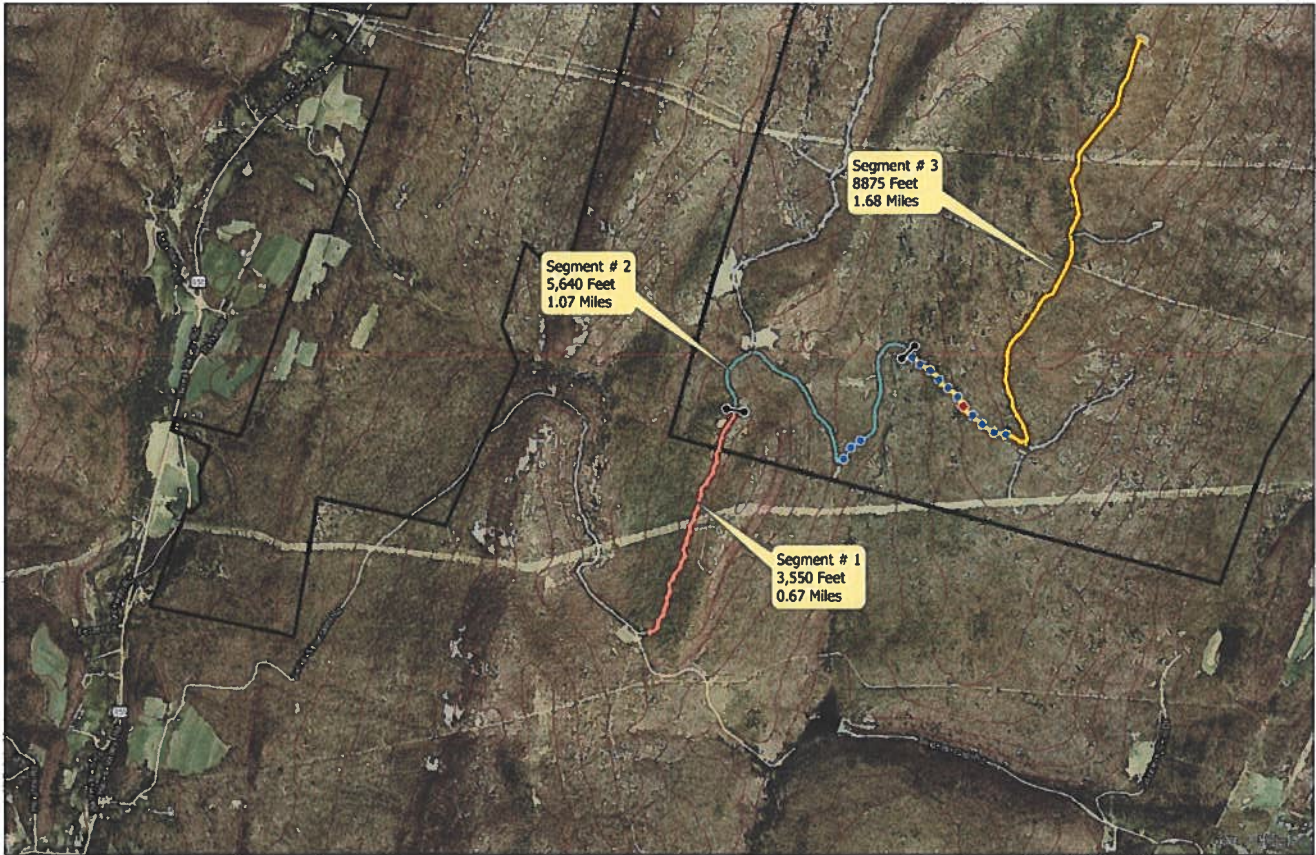
# State Game Lands 71

## Jacks Mountain Road Improvement Project

Huntington County  
Shirley & Union Townships

- PROJECT AREA
- STATE GAME LANDS





# State Game Lands 71

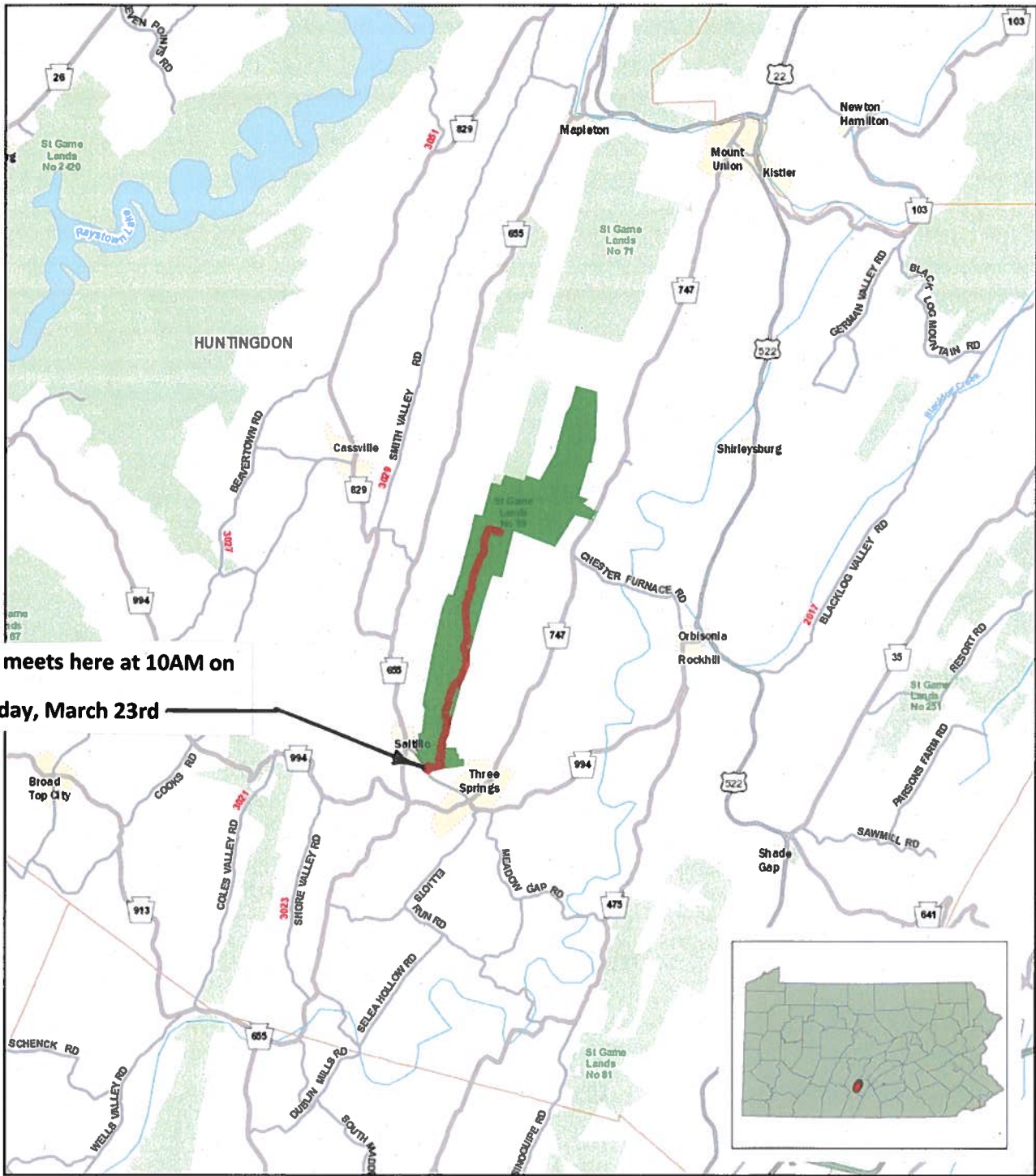
## Jacks Mountain Road Improvement Project

Huntingdon County  
Shirley & Union Townships



- ⌋ Gate
- Construct New Culvert
- Replace Culvert
- Segment # 1
- Segment # 2
- Segment # 3
- ==== Existing Road
- ▭ State Game Lands 71





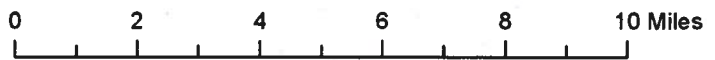
Tour meets here at 10AM on  
**Monday, March 23rd**

# State Game Lands 99

**Capt. Jacks Road  
 Improvement Project**

Huntingdon County  
 Cass, Clay, &  
 Cromwell Townships

- PROJECT AREA
- STATE GAME LANDS





# State Game Lands 99

## Capt. Jack's Road Improvement Project

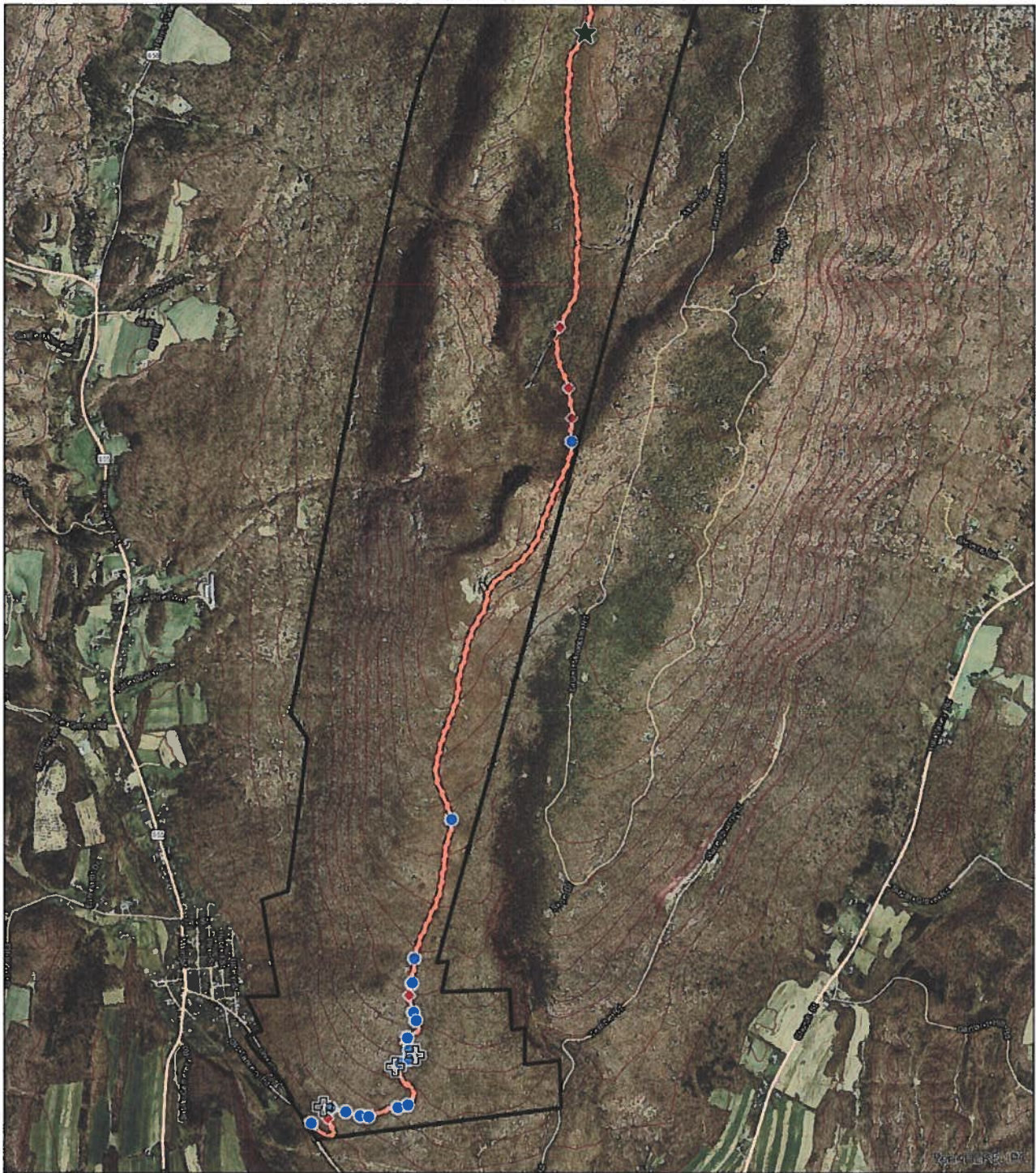
Huntingdon County  
Cass, Clay, &  
Cromwell Townships



Map 1 of 3

- Construct New Culvert
- ◆ Replace Culvert
- ★ Stockpile 80 Tons 2A Limestone
- ⊕ Apply 20 Tons 3A Limestone
- Stockpile 60 Tons 3A Limestone
- === Existing Road
- Road to Improve
- ▭ State Game Lands 99





# State Game Lands 99

## Capt. Jack's Road Improvement Project

Huntingdon County  
Cass, Clay, &  
Cromwell Townships



Map 2 of 3

- Construct New Culvert
- ◆ Replace Culvert
- ★ Stockpile 80 Tons 2A Limestone
- ⊕ Apply 20 Tons 3A Limestone
- Stockpile 60 Tons 3A Limestone
- === Existing Road
- Road to Improve
- ▭ State Game Lands 99





# State Game Lands 99

## Capt. Jack's Road Improvement Project

Huntingdon County  
Cass, Clay, &  
Cromwell Townships



Map 3 of 3

- Construct New Culvert
- ◆ Replace Culvert
- ★ Stockpile 80 Tons 2A Limestone
- ⊕ Apply 20 Tons 3A Limestone
- Stockpile 60 Tons 3A Limestone
- Existing Road
- Road to Improve
- ▭ State Game Lands 99

